

Site **CBNS9B**: West Bass River

Date Assessed: 20/06/02

**GPS Coordinates:** N 45° 24' 36.4''  
W 63° 47' 3.1''

**Crossing Status:** No Restriction

**Road Crossing:** Bridge, wooden, 14.5m wide

**Crossing Condition:** Intact but with some missing railings

**Restriction Indicators:** None

**Downstream of Crossing**

**Creek:** 10.2m wide, smooth, straight flow, scour pool

**Land:** Marshland and active farmland

**Upstream of Crossing**

**Creek:** 9.6m wide, smooth, straight flow, bank slumping and scour pool

**Land:** Marshland, residential and wooded area

**Comments:** While this bridge is not a restriction to tidal flow the support structures on either side of the channel are slightly pinching the river and causing the above mentioned scour pools and bank slumping. Repairs are necessary, as railings are missing, etc., and consideration should be made to replacement of bridge with a better design.



**Figure 1.**



**Figure 2.**



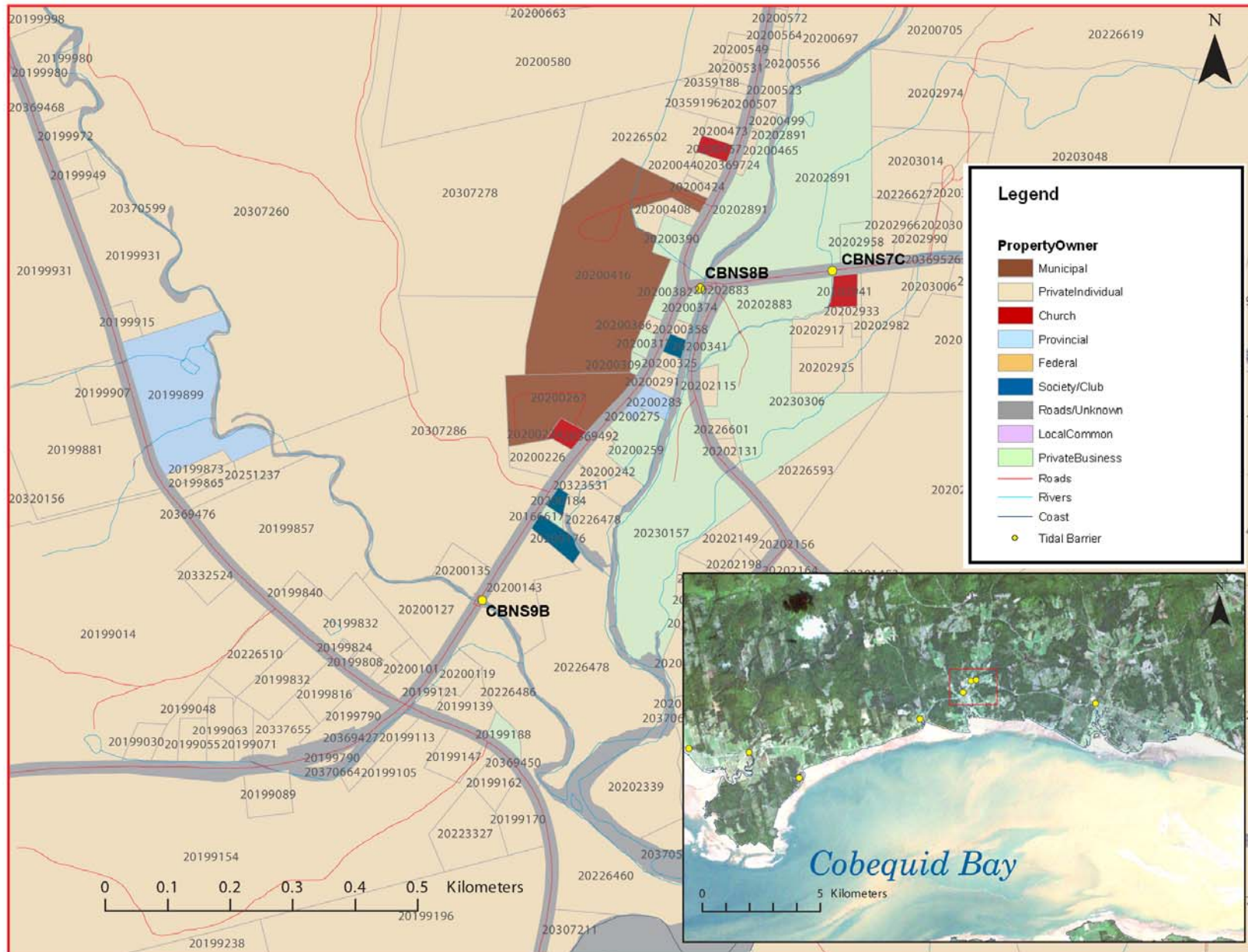
**Figure 3.**



**Figure 4.**



**Figure 5.**



**Figure 6:** Property management and tidal barrier data for Nova Scotia (Service Nova Scotia, and Municipal Relations)

Air Photo Not Available in GIS Database

Access through Land Information Services:

Photo Number: 94007-28