

Site **CBNS8B**: Bass River

Date Assessed: 25/06/02

GPS Coordinates: N 45° 24' 52.7''
W 63° 46' 47.3''

Crossing Status: No Restriction

Road Crossing: Bridge, wooden, 26.1m wide

Crossing Condition: Intact with some debris around base of bridge and railings are falling down

Restriction Indicators: None

Downstream of Crossing

Creek: 7.2m wide, smooth flowing

Land: Residential, business area. Road running along both sides of the river bank

Upstream of Crossing

Creek: 8.8m wide, smooth flowing

Land: Residential, wooded area

Comments: Repair bridge and maintain size of opening



Figure 1.



Figure 2.



Figure 3.



Figure 4.

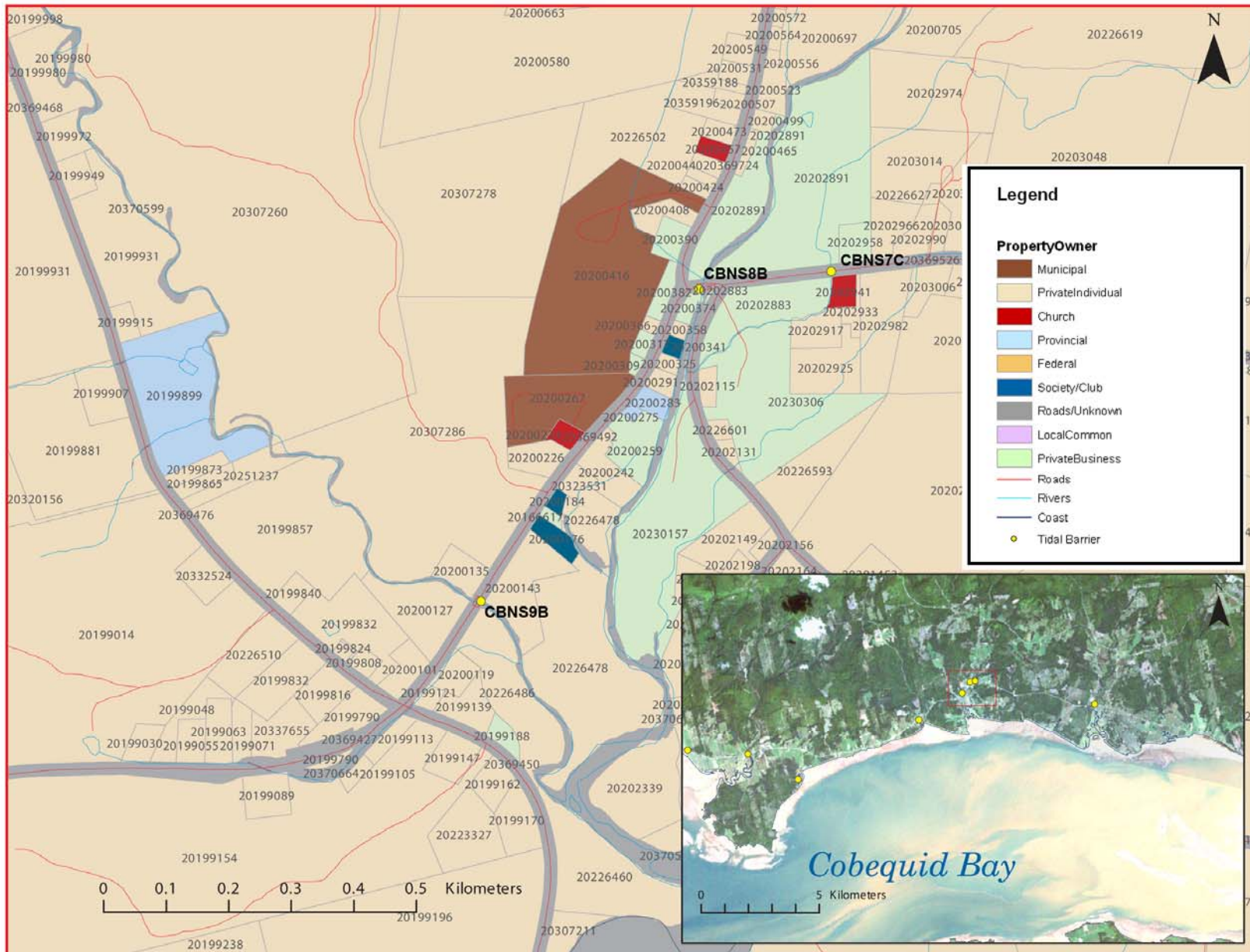


Figure 5: Property management and tidal barrier data for Nova Scotia (Service Nova Scotia, and Municipal Relations)

Air Photo Not Available in GIS Database

Access through Land Information Services:

Photo Number: 85308-130