

Site CBNS7C: Beaver Meadow Brook

Date Assessed: 25/06/02

GPS Coordinates: N 45° 24' 53.6''
W 63° 46' 37.4''

Crossing Status: No Restriction

Road Crossing: Culvert, square concrete,
1.85m

Crossing Condition: Intact

Restriction Indicators: None

Downstream of Crossing

Creek: 2m wide, narrow creek with
overgrown vegetation.

Land: Wooded area, residential

Upstream of Crossing

Creek: 2.3m wide, narrow creek with
overgrown vegetation.

Land: Wooded area, residential

Comments: This crossing may be at the high reaches of tidal water. Size of the opening should be maintained.



Figure 1.



Figure 2.

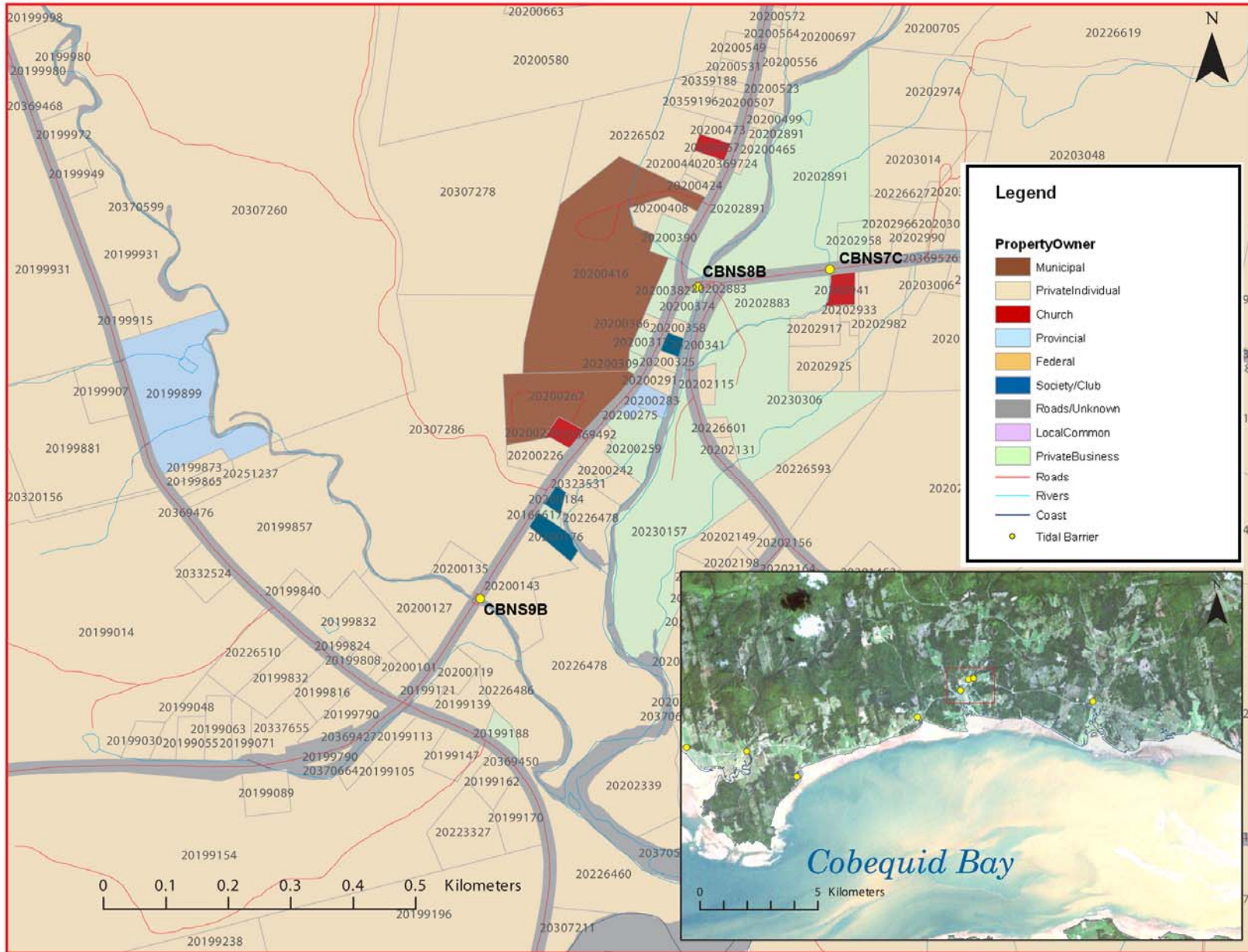


Figure 3: Property management and tidal barrier data for Nova Scotia (Service Nova Scotia, and Municipal Relations)

Air Photo Not Available in GIS Database

Access through Land Information Services:

Photo Number: 85308-130