

Site CBNS17C: Shad Brook

Date Assessed: 11/07/02

GPS Coordinates: N 45° 24' 40.8''
W 64° 3' 54.8''

Crossing Status: Partial Restriction

Road Crossing: Culvert (2 openings)
wooden box, 1.73m opening

Crossing Condition: In need of repairs,
division between openings is caving to one
side.

Restriction Indicators:

- Difference in water level
- Difference in vegetation
- Scour pool
- Bank slumping
- Divergent channel
- Slack water

Downstream of Crossing

Creek: 2.6m wide, angular flow, scour pool

Land: Marshland, wooded area

Upstream of Crossing

Creek: 2.6m wide, angular flow, bank slumping

Land: Inactive farmland, wooded area

Comments: Culvert should be replaced with a larger opening to restore a more natural tidal flow.

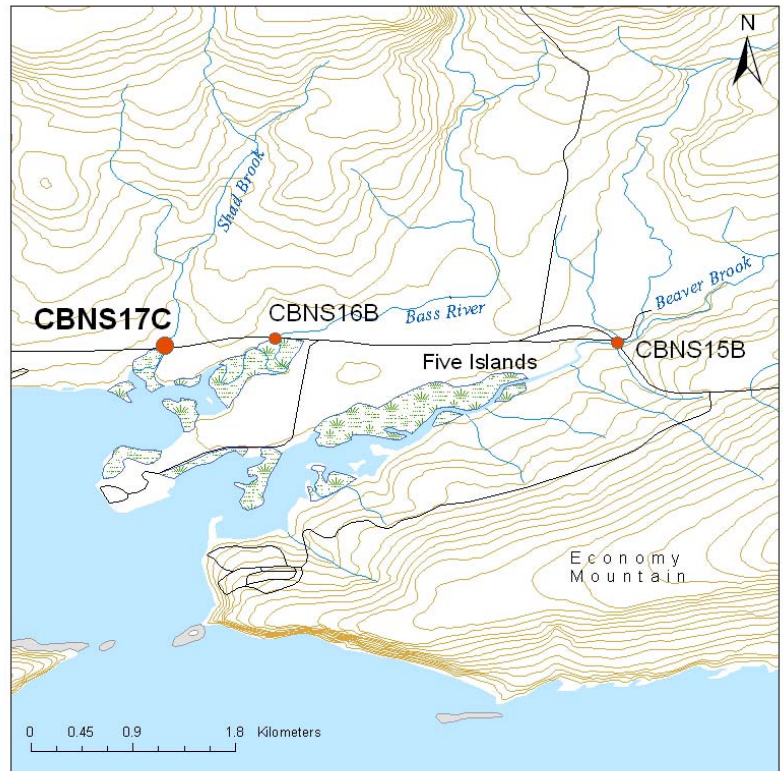




Figure 1.



Figure 2.

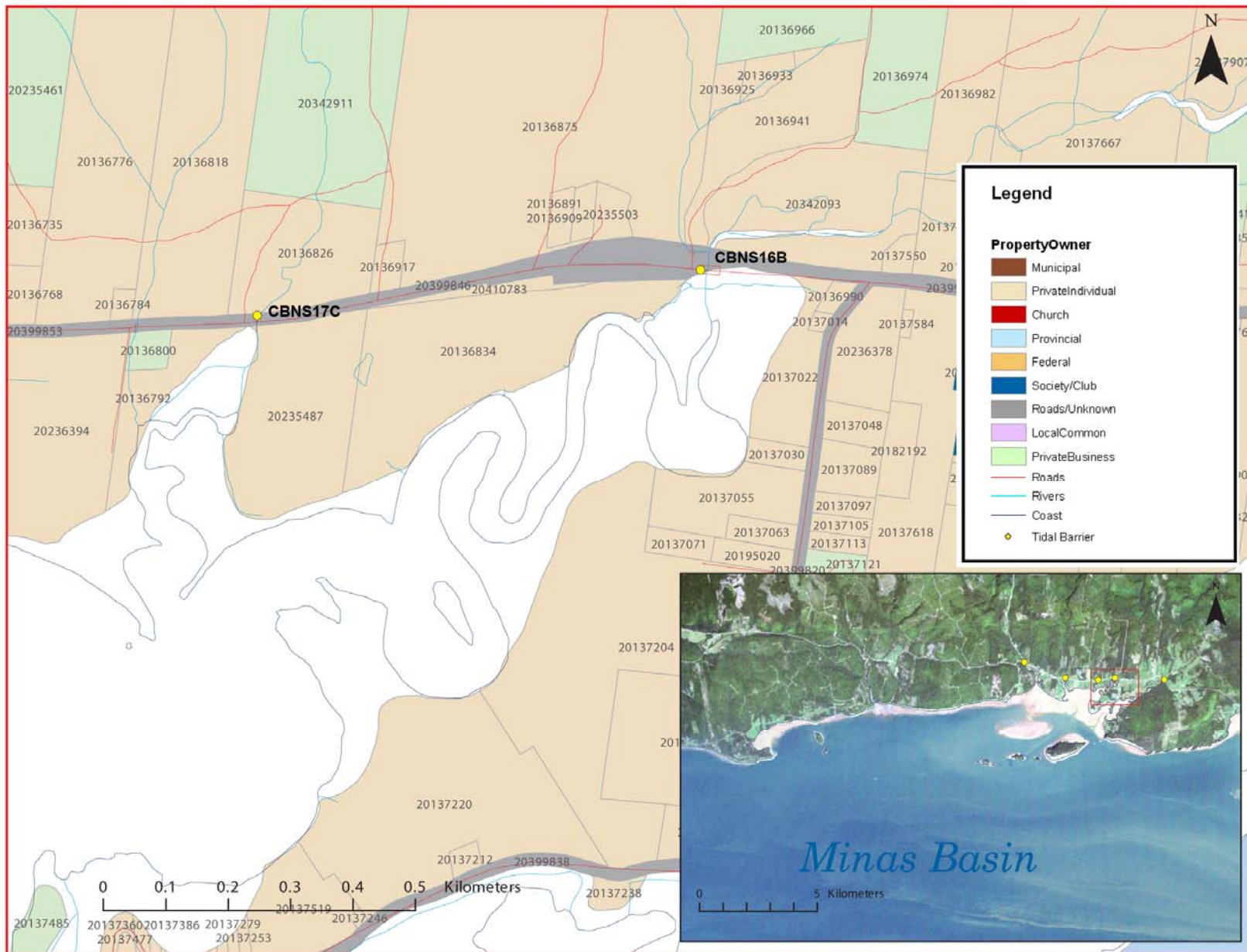


Figure 3: Property management and tidal barrier data for Nova Scotia (Service Nova Scotia, and Municipal Relations)

Air Photo Not Available in GIS Database

Access through Land Information Services:

Photo Number: 04313-75