

**Site CBNS16B:** Bass River, Five Islands

**Date Assessed:** 20/06/02

**GPS Coordinates:** N 45° 24' 43.5''  
W 64° 3' 22.3''

**Crossing Status:** No Restriction

**Road Crossing:** Bridge, concrete, 31m opening

**Crossing Condition:** Intact

**Restriction Indicators:** None

### Downstream of Crossing

**Creek:** 9.0m wide, smooth flow, some bank slumping and scour pool where there is some sedimentation around the channel edge. Channel appears to be diverted where rocks have been placed by new bridge.

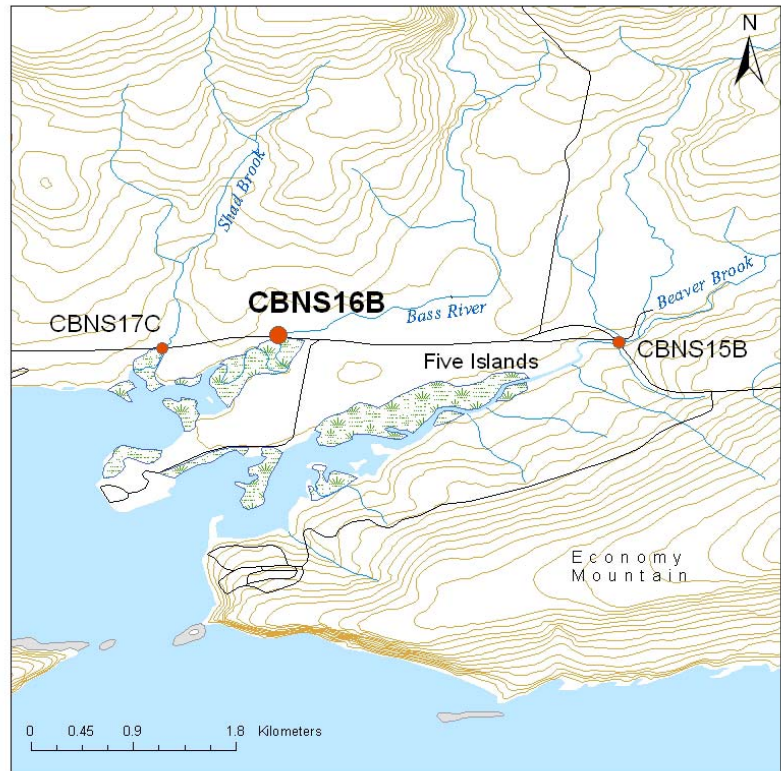
**Land:** Marshland

### Upstream of Crossing

**Creek:** 9.5m wide, smooth flow. Channel appears to have been diverted by road.

**Land:** Marshland

**Comments:** There is an old road with bridge remove upstream. There is a small creek with 45cm diameter steel culvert about 20m to one side of bridge, which could be larger. There is a small pool on seaward side about double the size of culvert. Upstream does not appear to receive much tidal flooding. The channel has been diverted from its original path; however the bridge does span the entire width of the stream and is not causing a restriction to flow.





**Figure 1.**



**Figure 2.**



**Figure 3.**



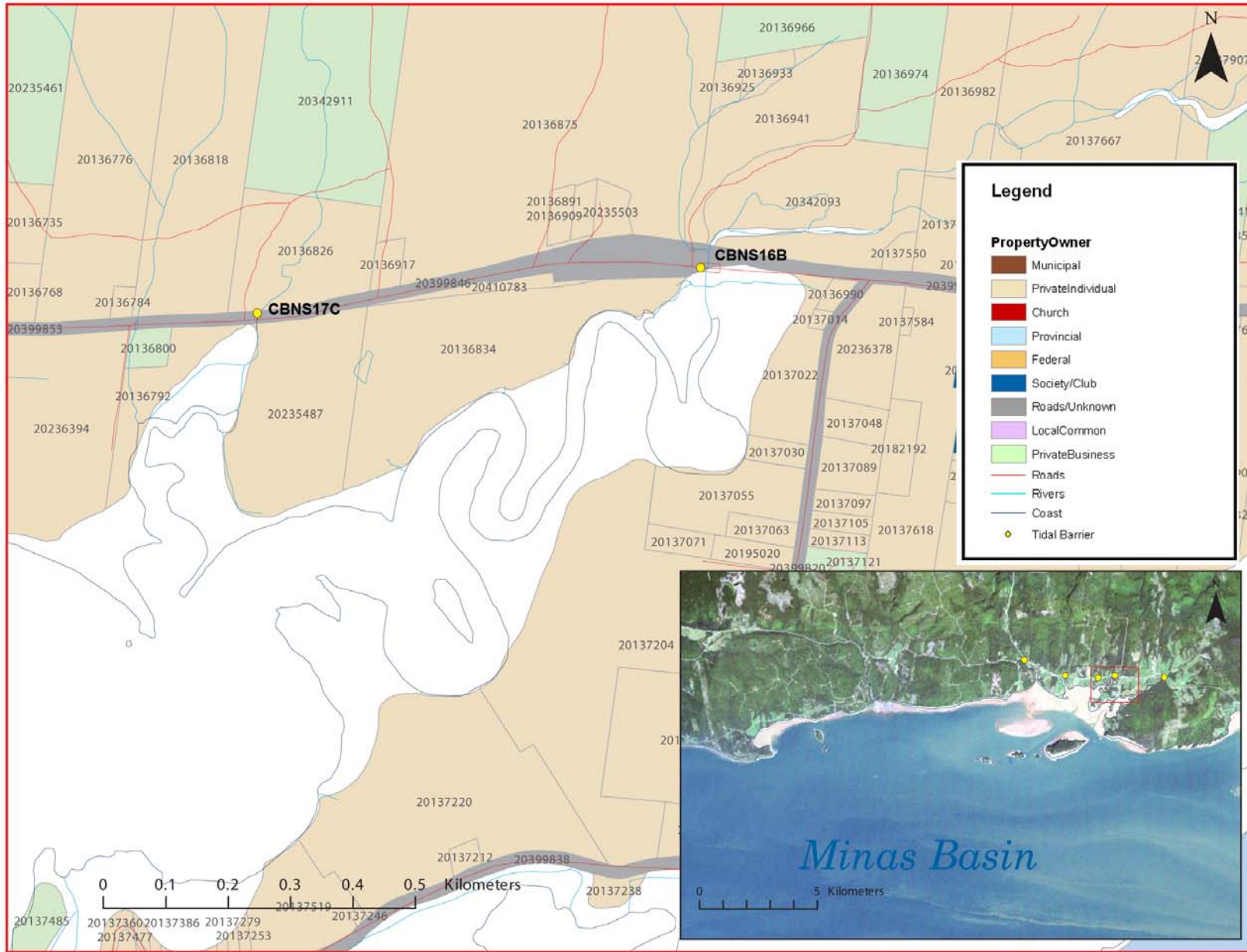
**Figure 4.**



**Figure 5.**



**Figure 6.**



**Figure 7: Property management and tidal barrier data for Nova Scotia (Service Nova Scotia, and Municipal Relations)**

Air Photo Not Available in GIS Database

Access through Land Information Services:

Photo Number: 04313-76