

Site AC8B: Allains River (Rte1)

Date Assessed: 26/08/04

GPS Coordinates: N 44° 44' 16.74''  
W 65° 31' 5.64''

Crossing Status: No restriction

Road Crossing: Hwy Bridge (concrete/steel) and Rail bridge, 100m each

Crossing Condition: Intact

Restriction Indicators: None

**Downstream of Crossing**

Creek: Smooth straight flow, scour pool. Opens into Annapolis Basin

Land: Salt marsh, bordered by and residential land and agricultural dykeland,

**Upstream of Crossing**

Creek: Smooth, straight flow

Land: Salt marsh, bordered by agricultural dykeland. There are remnants of an old bridge just upstream of crossing.

Comments: While this crossing does not pose as a significant restriction to tidal flow the remnants of the old bridge structure and the rock piles at the base of the bridge, both up and downstream are causing disruption to tidal flow. On the downstream side there is a large scour pool between the railway and highway bridge. This river is also largely dyked and assessments of the usage of farmland could be made to determine if breaching of dykes is possible in the future to restore salt marsh habitat.

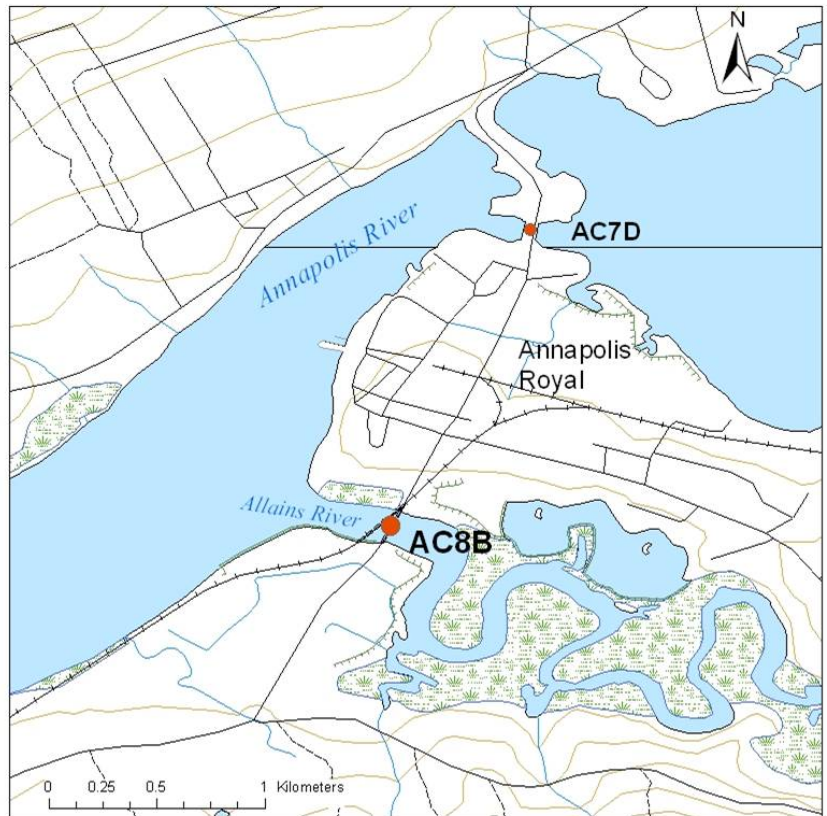


Figure 1. Upstream view of bridge showing large rock pile near base of bridge.



Figure 2. Upstream remnants of old Crossing.



Figure 3. View of downstream and rail bridge

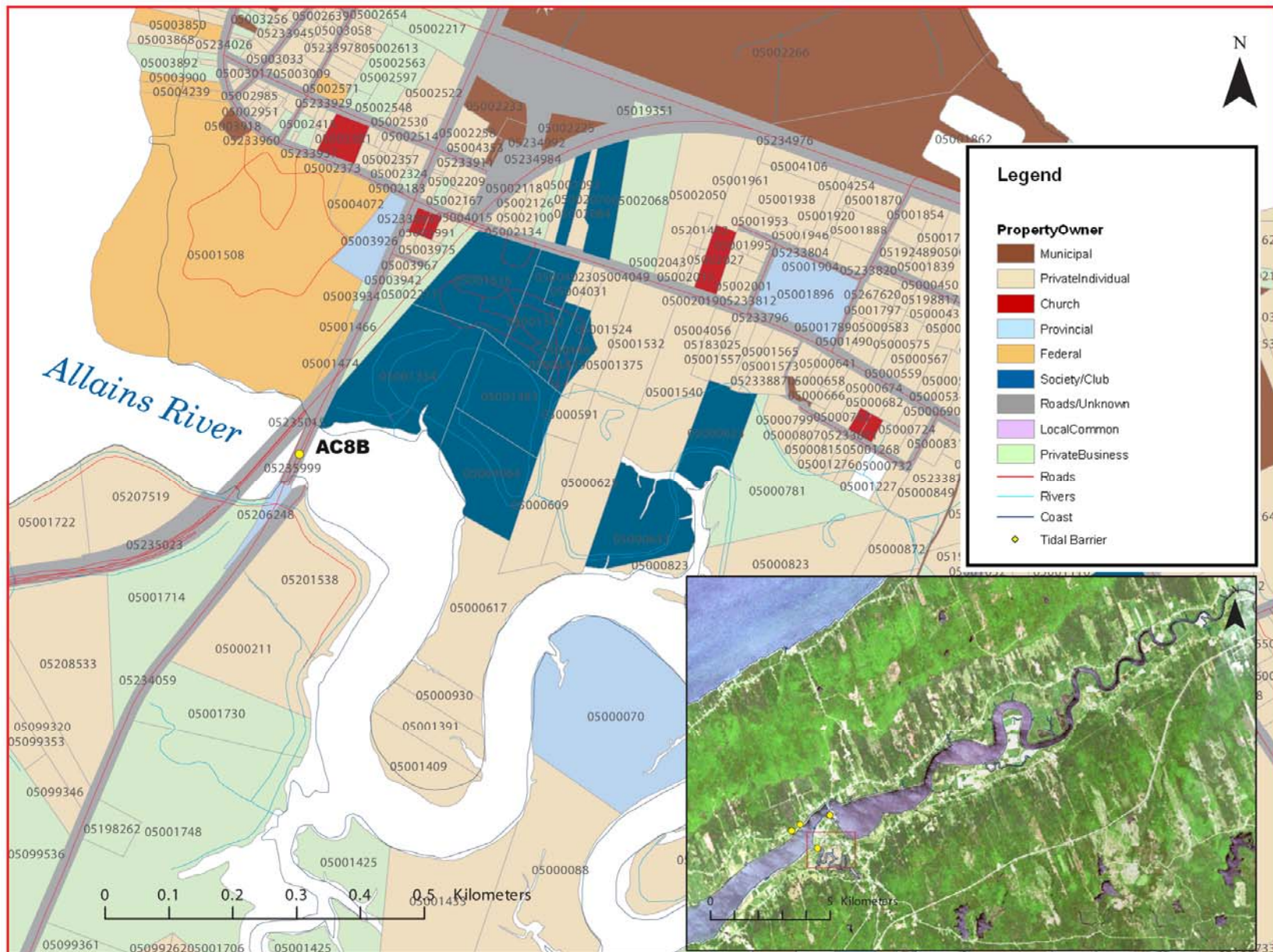


Figure 4: Property management and tidal barrier data for Nova Scotia (Service Nova Scotia, and Municipal Relations)

