

Site AC1C: Thornes Brook

Date Assessed: 30/11/04

GPS Coordinates: N 44° 41' 59.1''  
W 65° 31' 44.16''

Crossing Status: Partial restriction

Road Crossing: Culvert  
(wooden/square), 1.5m

Crossing Condition: Intact

Restriction Indicators:  
Difference in stream width  
Bank slumping  
Difference in water level  
Hanging culvert

**Downstream of Crossing**

Creek: 5m wide, bank slumping.

Land: Beach.

**Upstream of Crossing**

Creek: 2m wide, bank slumping.

Land: Wooded.

Comments: Due to the elevation rise there is not a huge influence by the tide at this site, however this crossing may be a barrier to fish passage since it is not flush with the creek bottom. Lowering and enlarging the opening will improve water flow, fish passage and stream conditions.



Figure 1. Downstream view of crossing

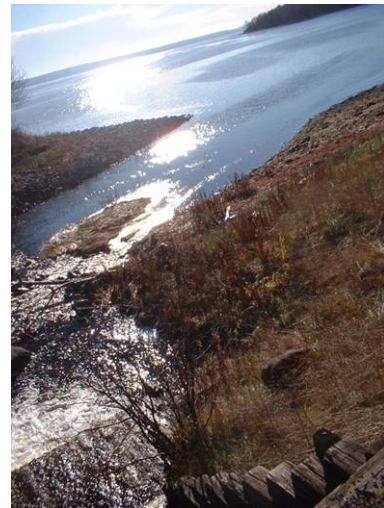


Figure 2. Downstream of crossing



Figure 3. Upstream of crossing

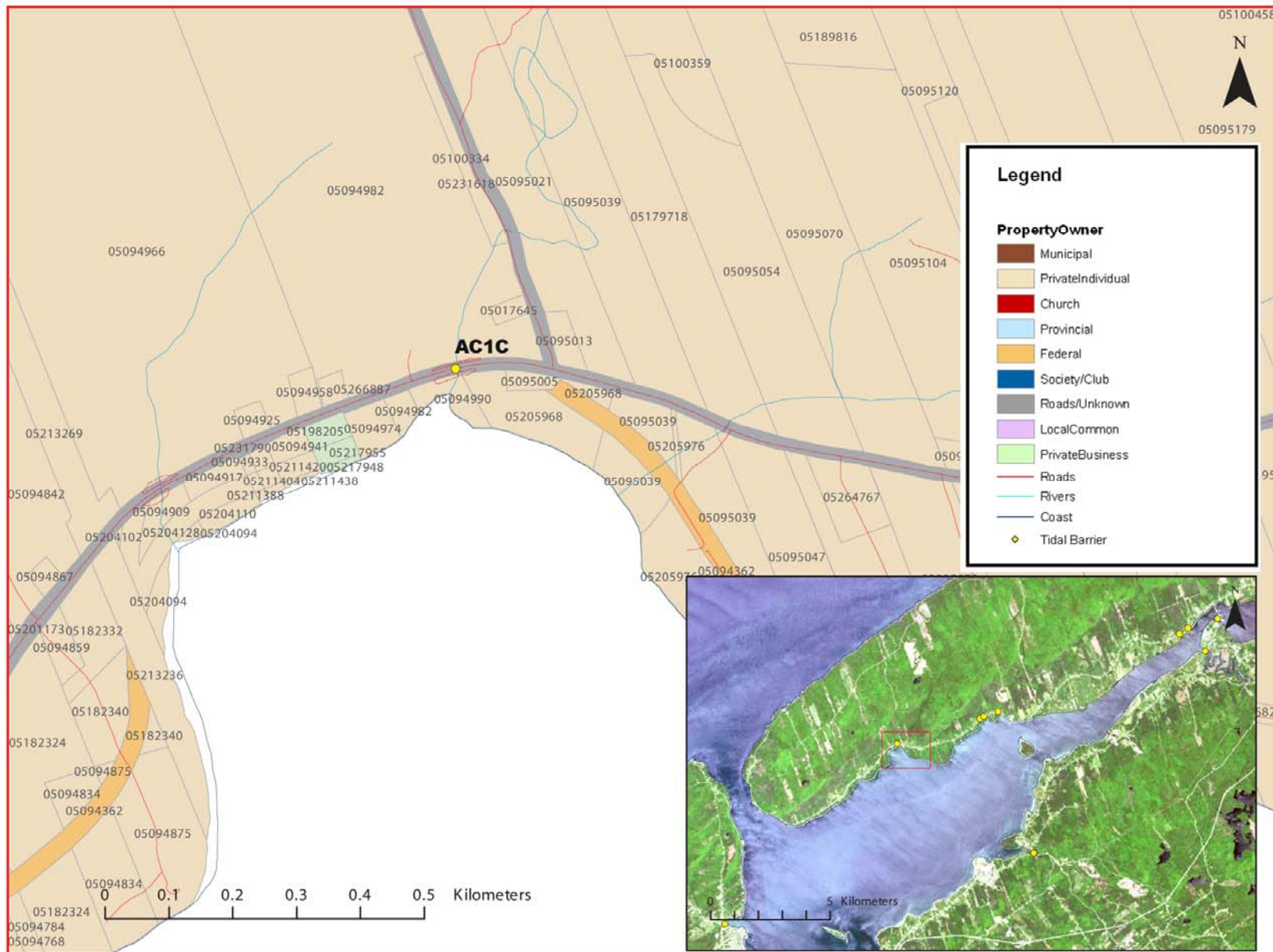


Figure 4: Property management and tidal barrier data for Nova Scotia (Service Nova Scotia, and Municipal Relations)

